

ULVAC

Oil Rotary Vacuum Pump (VDN Series)
VDN301/ VDN401/VDN602/VDN902



Features

Low noise

Optimized design achieved quiet running.

Easy maintenance

- Pump body can be removed without disconnecting the inlet vacuum pipes.
- Checking, adding and changing oil are done at the same side of the pump to facilitate greater ease in performing routine maintenance and inspection. A variable oil volume is adopted to extend the complementary time of oil.

Forced oil circulation system ensures stable pumping speed around atmospheric pressure

When equipped with optional oil mist trap and oil return mechanism, these pumps can run continuously at pressures equal to or below atmospheric pressure.

Applications

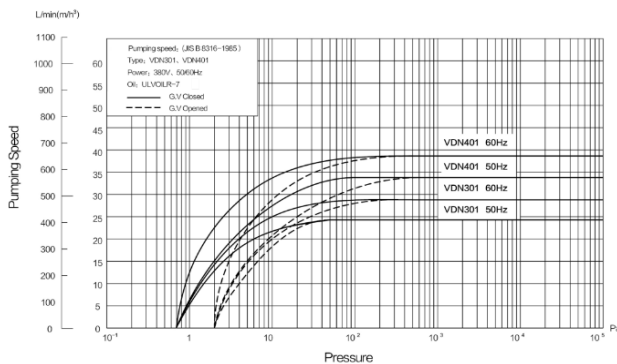
- ✓ Evaporation, sputtering and ion plating.
- ✓ Gas substitution, back-filling and vacuum insulation.
- ✓ Vacuum drying, freeze drying, vacuum degassing.
- ✓ Analytical instruments and leak testers.
- ✓ Vacuum packing, vacuum adsorption and transport, vacuum molding and vacuum casting.

Oil Rotary Vacuum Pump (VDN Series) VDN301/VDN401/VDN602/VDN902

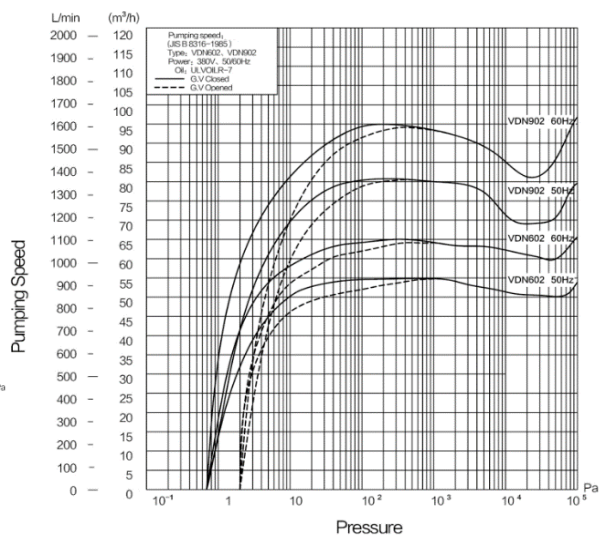
Specifications

Type		VDN301	VDN401	VDN602	VDN902
Design pumping speed	50 Hz	30 (500)	40 (667)	60 (1000)	90 (1500)
	60 Hz	36 (600)	48 (800)	72 (1200)	108 (1800)
Ultimate pressure (Pa)		G.V Closed	6.7×10^{-1}		
		G.V Opened	2.0		
Motor	kW (Poles)	1.1(4P)	1.5(4P)	2.2(4P)	3.7(4P)
	V-Hz	200/220/380/400/415-50 200/220/380/400/460-60			
Oil capacity	L	1.0 - 2.5		2.5 - 4.0	
Pump oil	ULVOIL R-7				
Inlet (JIS B 2290)	VG40		VG50		
Outlet (JIS B 2290)	VG40				
Weight	kg	59	61	89	104

Pumping Speed Curves



VDN301/VDN401

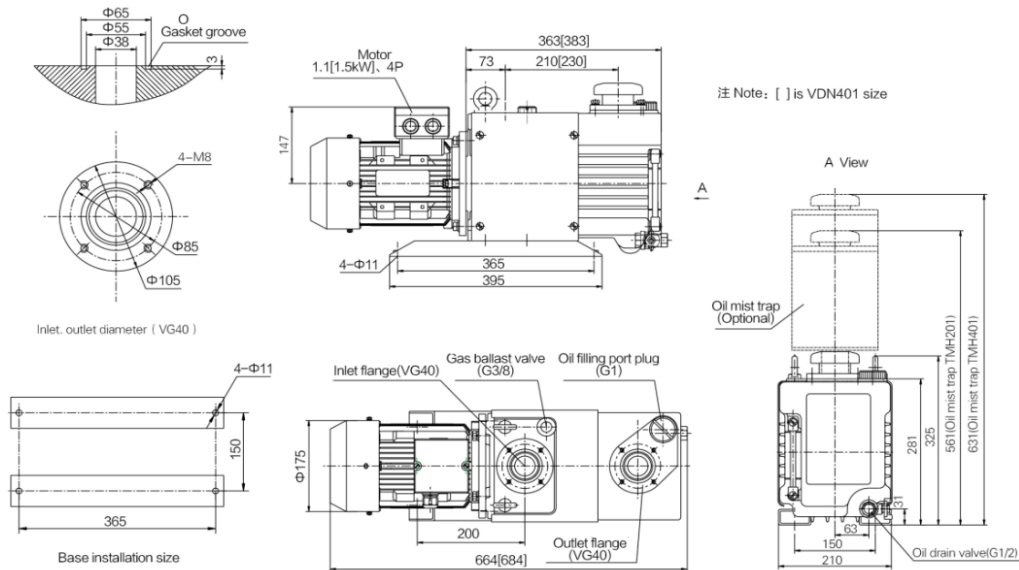


VDN602/VDN902

Oil Rotary Vacuum Pump (VDN Series) VDN301/ VDN401/VDN602/VDN902

Dimensions

VDN301/VDN401:



VDN602/VDN902:

Note: [] is VDN902 size

