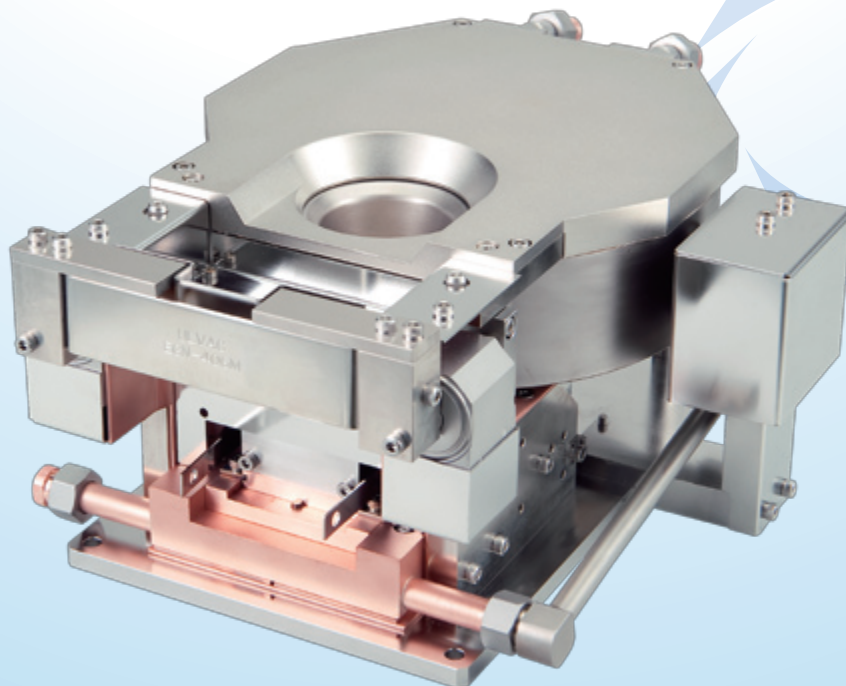


EB GUN for Metal Evaporation [EGN Series]

EGN series is the easy maintenance electron beam evaporation source for metal evaporation which has flat top configuration without any structural object on the evaporating side of the metal material newly developed in consideration of maintainability.



Features

- ▶ **Flat Top Structure and 15mm Hearth Deck**
Easy cleaning because of less coated areas on the evaporation source of electron beam.
- ▶ **New Emitter Configuration**
Easy assembly by reducing parts to 60% comparing with conventional unit.
- ▶ **Water-cooling Structure for Entire Crucible Side Surface**
Less contamination from crucible to evaporation material compared with the one with only bottom side cooling.
- ▶ **Selectable Beam Form**
Most suitable beam form is selectable, either ribbon form for metal evaporation or spot beam form for oxide and compound evaporation.
- ▶ **High Reliability**
Design based on long time experience as the vacuum process equipment manufacturer.
- ▶ **Two Locating Faces Configuration**
All parts to be removed and installed during maintenance are fixed by two locating faces.

Applications

- ▶ Evaporation source for electron beam evaporation
- ▶ Evaporation source for ion plating
- ▶ Evaporation source for roll coater evaporation

EB GUN for Metal Evaporation [EGN Series]

Specifications

Model	EGN-206M	EGN-406M
Deflection angle	270°	
Quantity of crucibles	6	
Crucible capacity	20cc	40cc
Cooling-water flow rate	10L/min	
Dimensions (W×D×H)	260mm×340mm×144mm	
Weight	28kg	

Incidental parts selection guide

Name	Model	Specification	Required number
Hi-voltage terminal	BERH311A ※	Chamber Side introducing type	2
Current terminal	PTS-004 ※	For coil wiring	1
Earth terminal	ERZ-003 ※		1
Pressure switch	DTA-002 ※		1
Water-cooling terminal	DK5203-045 ※		10φ×4
Rotary control terminal (motor)			1★
Hearth positioner		Crucible detection unit	Standard accessory
Current terminal	PTS-004 ※	For hearth positioner	1
Hearth rotary coupling parts		Joint	1 set

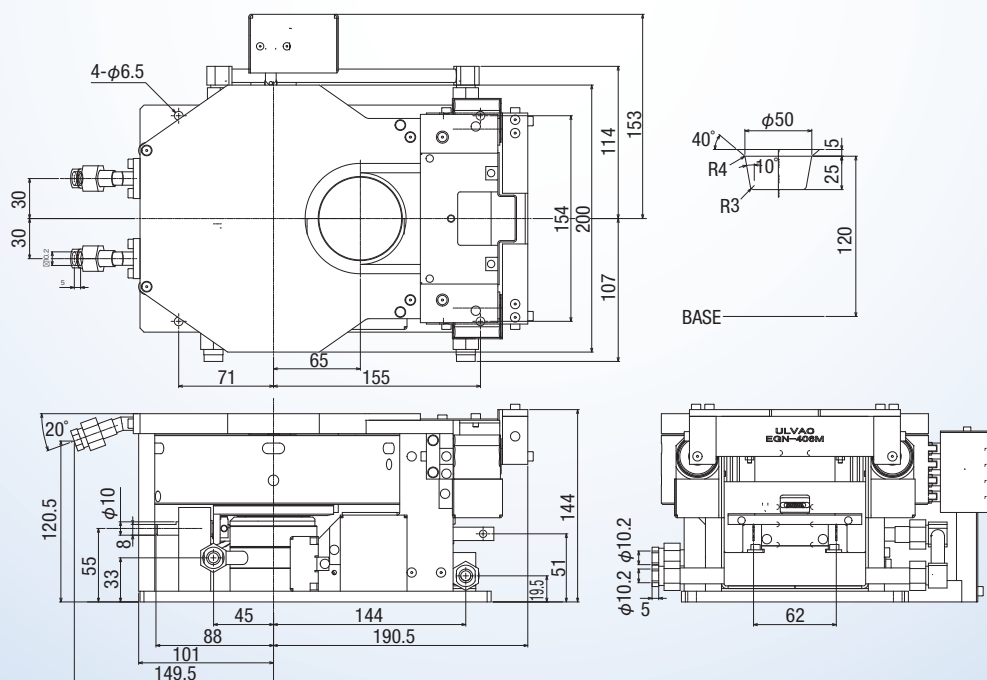
All Introducing ports are unified into 30φ Boss type.

★ Special order

※ Service port of 30φ is necessary.

Dimensions

Unit: mm



ULVAC, Inc. Components Division

www.ulvac.co.jp/en

Overseas Sales in Japan TEL +81-467-89-2261

USA : ULVAC Technologies, Inc. TEL +1-978-686-7550
 GERMANY : ULVAC GmbH TEL +49-89-960909-0
 CHINA : ULVAC (SHANGHAI) Trading Co., Ltd. TEL +86-21-6127-6618
 TAIWAN : ULVAC TAIWAN, Inc. TEL +886-3-579-5688
 KOREA : ULVAC KOREA, Ltd. TEL +82-31-683-2922
 SINGAPORE : ULVAC SINGAPORE PTE LTD TEL +65-6542-2700

PHILIPPINES : ULVAC SINGAPORE PTE LTD Philippines Branch TEL +63-46-437-7700
 VIETNAM : ULVAC SINGAPORE PTE LTD Vietnam Representative Office TEL +84-8-6299-8262
 INDONESIA : ULVAC SINGAPORE PTE LTD Indonesia Representative Office TEL +62-21-8990-5070
 THAILAND : ULVAC (THAILAND) LTD TEL +66-2-7388883
 MALAYSIA : ULVAC MALAYSIA SDN. BHD. TEL +60-3-5121-4700
 INDIA : ULVAC, Inc., India Branch TEL +91-40-27007006

▶ This catalog is subject to change without notice.

▶ This catalog is published in order to sell this product in overseas. Please see Japanese catalog when purchasing in Japan.