

PSO series

Robust, large displacement (single stage)!

- Pumping speed: 250, 540, (1050) m³/h
- Ultimate pressure: 3 Pa
- Cooling water



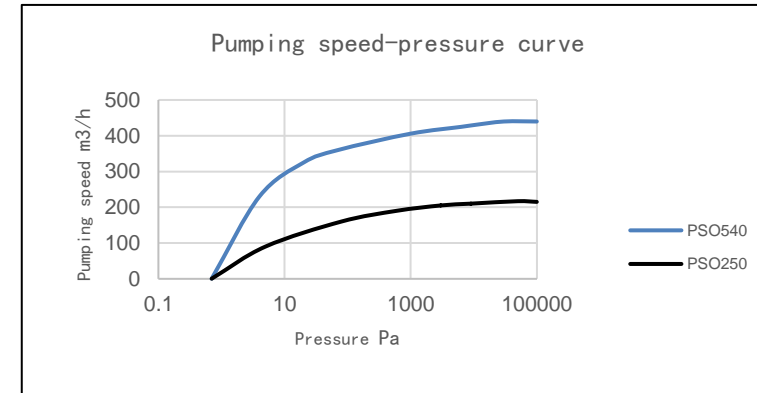
Specifications

Model		PSO250(-G)	PSO540(-G)	(PSO1050)
Performance	Ultimate pressure (Pa)	3.0		
	Maximum pumping speed (m ³ /h)	250	540	1050
Motor	Power supply	3 Phase 380V 50Hz		
	Power consumption (kW)	5.5	11	30
	Remark	Ordinary motor IP55 ※Various voltages and explosion-safe motors are also available (manufactured to order)		
Dimensions	Width (mm)	695	830	980
	Length (mm)	700(970)	1120(1340)	1050
	Height (mm)	970	1200	1730
	Weight (kg)	480(550)	800(880)	1880
	Inlet port	ISO80	ISO100	ISO200
	Outlet port	ISO63	ISO80	ISO100
Lubrication	Oil capacity (L)	18(42)	28(68)	-
	Oil	OKO100		
Cooling	Cooling water flow rate (L/min)	12	15	25
	Cooling water port	G1/2	G3/4	G3/4

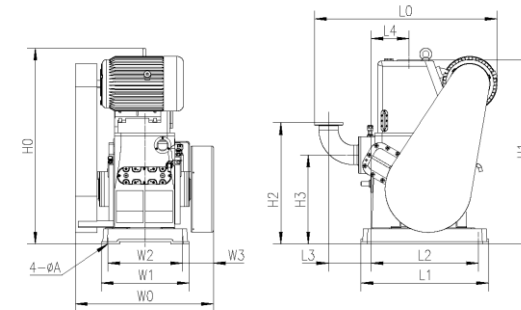
※ (-G) is the fuel tank specification
※ A large oil mist filter is prepared

Single-stage Oil Piston Vacuum Pump

Pumping rate curve



Dimensions (mm)



Type	W0	W1	W2	W3	H0	H1	H2	H3
PSO250	695	325	216	255	970	910	—	350
PSO540	830	530	450	186	1200	1108	730	535
Type	L0	L1	L2	L3	L4	φA		
PSO250	680	540	480	—	139	18		
PSO540	1100	770	645	40	250	28		